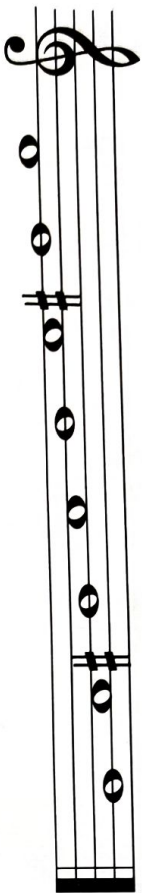


### 53. Stupnica D dur

Zakrúžkuj v stupnici D dur tóny *fi*<sup>1</sup> a *ci*<sup>2</sup>. Ymenuj tóny stupnice D dur.



### 54. Posuvky

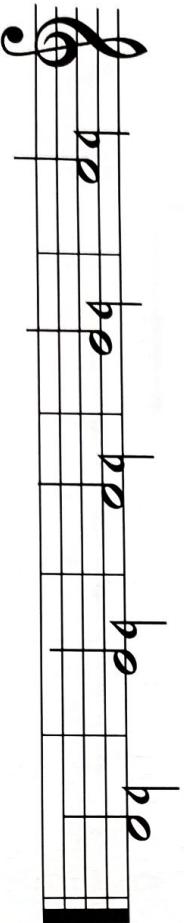
Křížik notu \_\_\_\_\_ o pol tónu.

Béčko notu \_\_\_\_\_ o pol tónu.

Odrážka ruší platnosť \_\_\_\_\_ a \_\_\_\_\_.

### 55. Noty

Spoj čiarou noty a ich názvy.



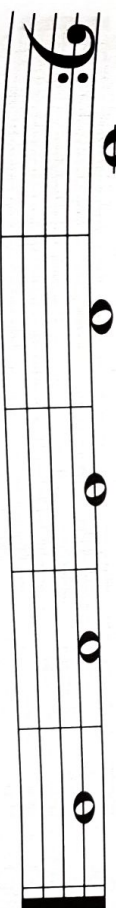
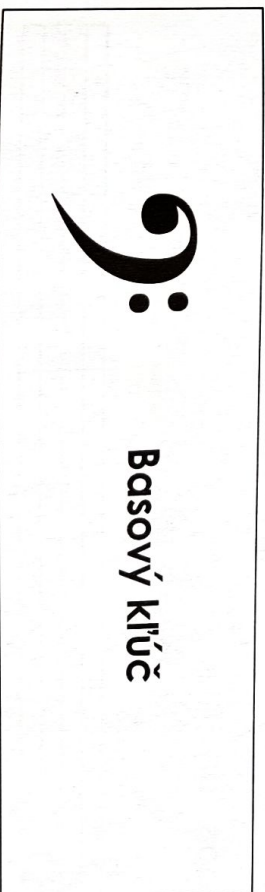
- es*<sup>2</sup>
- ces*<sup>2</sup>
- ges*<sup>2</sup>
- des*<sup>2</sup>
- fes*<sup>2</sup>

### 56. Čo patrí k sebe

Spoj čiarou, čo patrí k sebe.

- |                   |               |
|-------------------|---------------|
| <b>MEZZOFORTE</b> | viazane       |
| <b>LEGATO</b>     | slabo         |
| <b>FORTE</b>      | stredne silno |
| <b>PIANO</b>      | zosilňovať    |
| <b>CRESCENDO</b>  | silno         |

### 57. Noty



- cl*
- h*
- a*
- g*
- f*